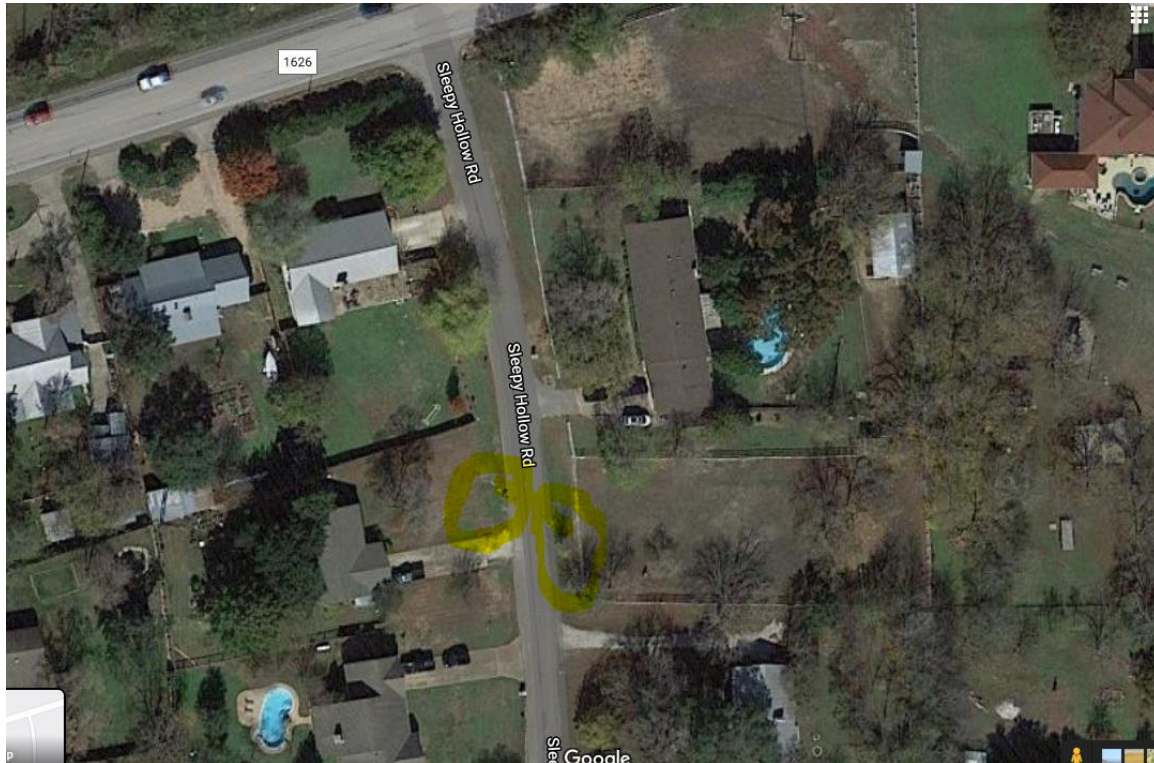


Drainage Complaints to be considered for FY 20-21 (not all inclusive)

11808 Sleepy Hollow Ln

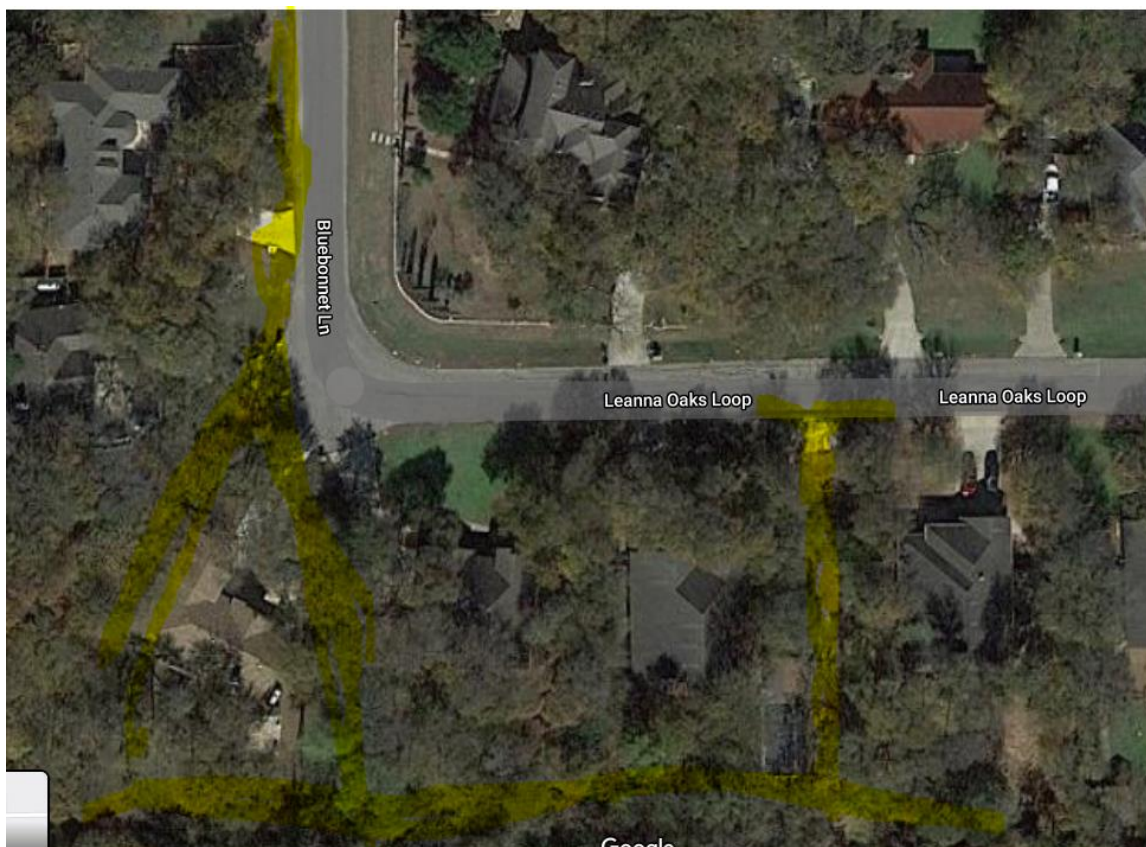
Pipe under the road is obstructed, runoff from 1626 (from the northwest, across the property at 11808 Sleepy Hollow) and pools in the front yard. Water that does make it through the pipe pools in the right of way on the east side of Sleepy Hollow Ln.



12108 Bluebonnet Ln./ 531 Leanna Oaks Loop

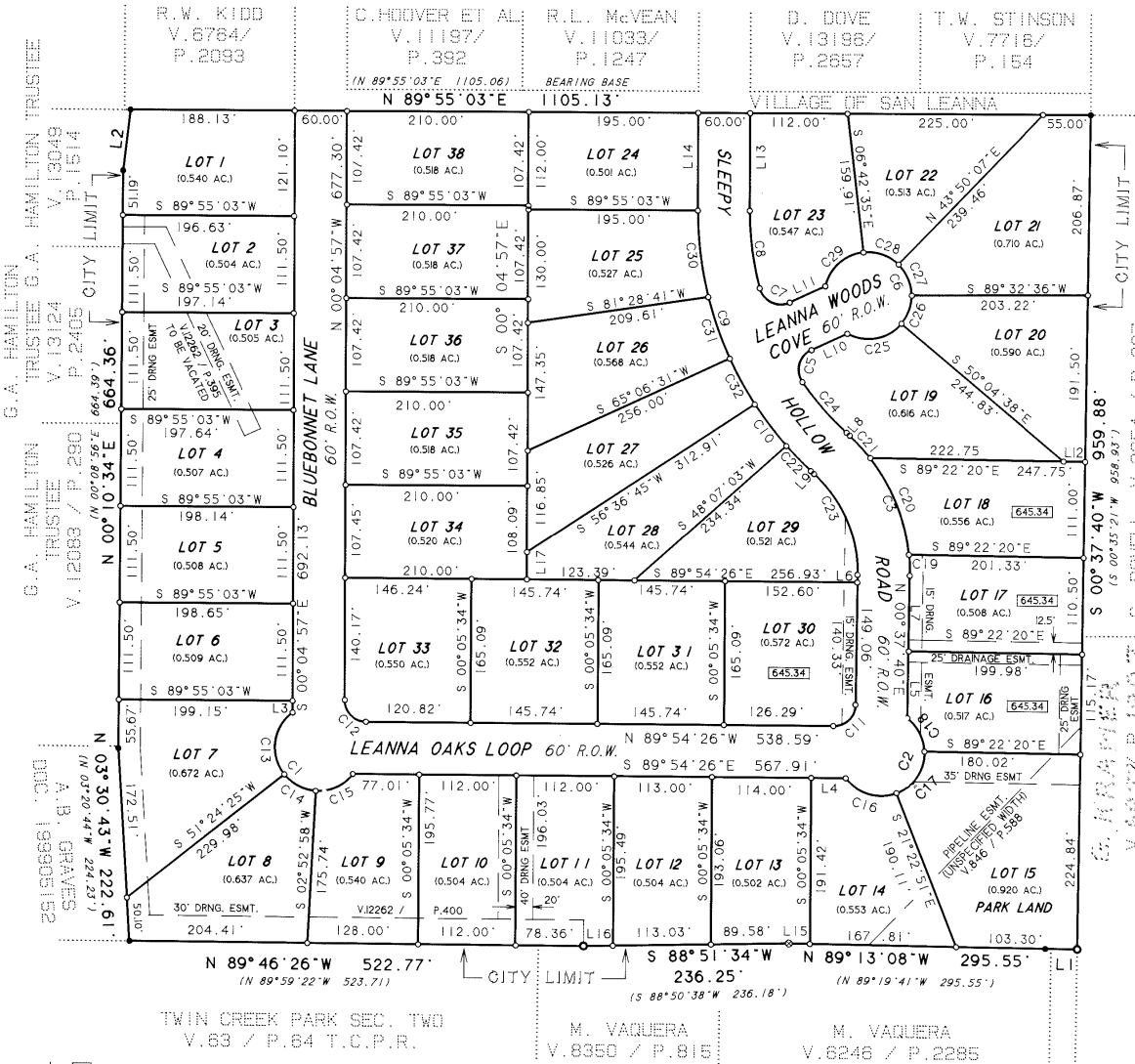
We have a big problem with storm water runoff through our yard. The water pours in from yards on both sides of us and from the street because the ditch system is poorly done. It has ruined our landscaping, drowned our grass, and eroded a lot of topsoil. We have spent a lot of money on projects trying to control it, but keep getting overwhelmed. The link below has pictures and videos of the water in action. It streams across our yard, and piles up against our back fence, before finally making it through the fence and into the ditch behind. Please help us with this.

https://www.dropbox.com/sh/u43c9atnxzrbu50/AABI_5O4MfRsAzvROGdDqWQxa?dl=0

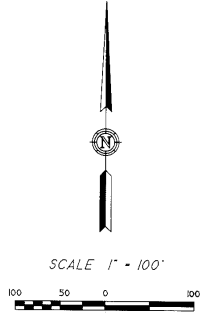


SAN LEANNA PARK SUBDIVISION

IN
THE VILLAGE OF SAN LEANNA



CURVE TABLE		CURVE TABLE	
C1 A-171.12' R-50.00' C-S 44°59'42"E 99.02'	C24 A-77.21' R-345.00' C-N 41°11'58"W 77.05'	C25 A-68.35' R-50.00' C-N 79°04'38"E 63.15'	C26 A-35.23' R-50.00' C-N 19°43'46"E 34.51'



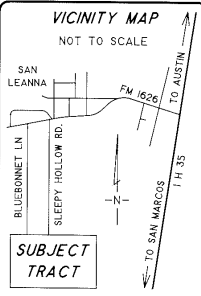
- LEGEND**
- 1/2" IRON PIN FOUND
 - 1/2" IRON PIN SET
 - 60D NAIL FOUND
 - 1/2" IRON PIPE FOUND
 - 5/8" IRON PIN FOUND
 - MINIMUM FLOOR ELEV.
 - () RECORD INFORMATION

OWNER:
JOHN GILMORE, TRUSTEE
503 EXPLORER
AUSTIN, TEXAS 78734

ENGINEER:
DAVID T. SMITH, P.E.
3937 R.R. 620 SOUTH
AUSTIN, TEXAS 78738
PHONE: 263-8144

SURVEYOR:
ROBERT BARCOMB, R.P.L.S.
8906 WALL STREET
SUITE 302
AUSTIN, TEXAS 78754
PHONE: 832-1232

BENCH MARK
SPINDLE SET IN 36" OAK
NEAR CENTER OF SLEEPY
HOLLOW ROAD, WEST OF
LOT 16. ELEV. 646.49



C2 A-170.80' R-50.00' C-N 45°21'37"E 99.06'	C27 A-39.89' R-50.00' C-N 23°18'39"W 38.84'	C28 A-44.11' R-50.00' C-N 71°26'15"W 42.69'	C29 A-62.23' R-50.00' C-S 47°38'03"W 58.29'
C3 A-180.92' R-214.89' C-N 23°29'29"W 175.63'	C30 A-100.26' R-405.00' C-S 07°10'23"E 100.00'	C31 A-75.11' R-405.00' C-S 19°34'42"E 75.00'	C32 A-60.05' R-405.00' C-S 29°08'21"E 60.00'
C4 A-170.80' R-50.00' C-N 45°21'37"E 99.06'	C5 A-43.59' R-25.00' C-N 15°09'37"E 38.27'	C6 A-249.81' R-50.00' C-N 24°53'29"W 60.00'	C7 A-43.59' R-25.00' C-N 64°56'34"W 38.27'
C8 A-89.79' R-345.00' C-N 07°32'15"W 89.54'	C9 A-335.96' R-405.00' C-S 23°50'47"E 326.41'	C10 A-60.06' R-405.00' C-S 37°38'08"E 60.00'	C11 A-39.04' R-25.00' C-S 45°21'37"W 35.19'
C12 A-39.19' R-25.00' C-N 44°59'41"W 35.30'	C13 A-79.97' R-50.00' C-S 07°13'37"W 71.72'	C14 A-42.35' R-50.00' C-S 62°51'17"E 41.09'	C15 A-48.80' R-50.00' C-N 64°55'22"E 46.89'
C16 A-65.10' R-50.00' C-S 74°04'44"E 60.60'	C17 A-61.32' R-50.00' C-N 33°29'17"E 57.55'	C18 A-44.38' R-50.00' C-N 02°35'28"W 42.94'	C19 A-24.14' R-214.89' C-N 02°35'28"W 24.13'
C20 A-121.95' R-214.89' C-N 22°04'00"W 120.32'	C21 A-34.83' R-214.89' C-N 42°58'01"W 34.79'	C22 A-40.48' R-405.00' C-S 44°44'50"E 40.46'	C23 A-130.41' R-154.89' C-S 23°29'29"E 126.59'

LINE TABLE

L1 N 89°24'31"W 36.70' (N 89°26'22"W 36.64')	L2 N 06°40'15"E 70.40' (N 06°40'32"E 70.38')	L3 S 00°04'57"E 13.53'	L4 S 89°54'26"E 39.90'
L5 N 00°37'40"E 77.15'	L6 S 00°37'40"W 8.73'	L7 N 00°37'40"E 86.41'	L8 N 47°36'38"W 4.89'
L9 S 47°36'38"E 4.89'	L10 N 65°06'31"E 45.24'	L11 S 65°06'31"W 45.24'	L12 S 89°22'20"E 25.00'
L13 N 00°04'57"W 112.00'	L14 S 00°04'57"E 112.00'	L15 N 89°13'08"W 24.44'	L16 S 88°51'34"W 33.64'
L17 S 00°04'57"E 31.57'			

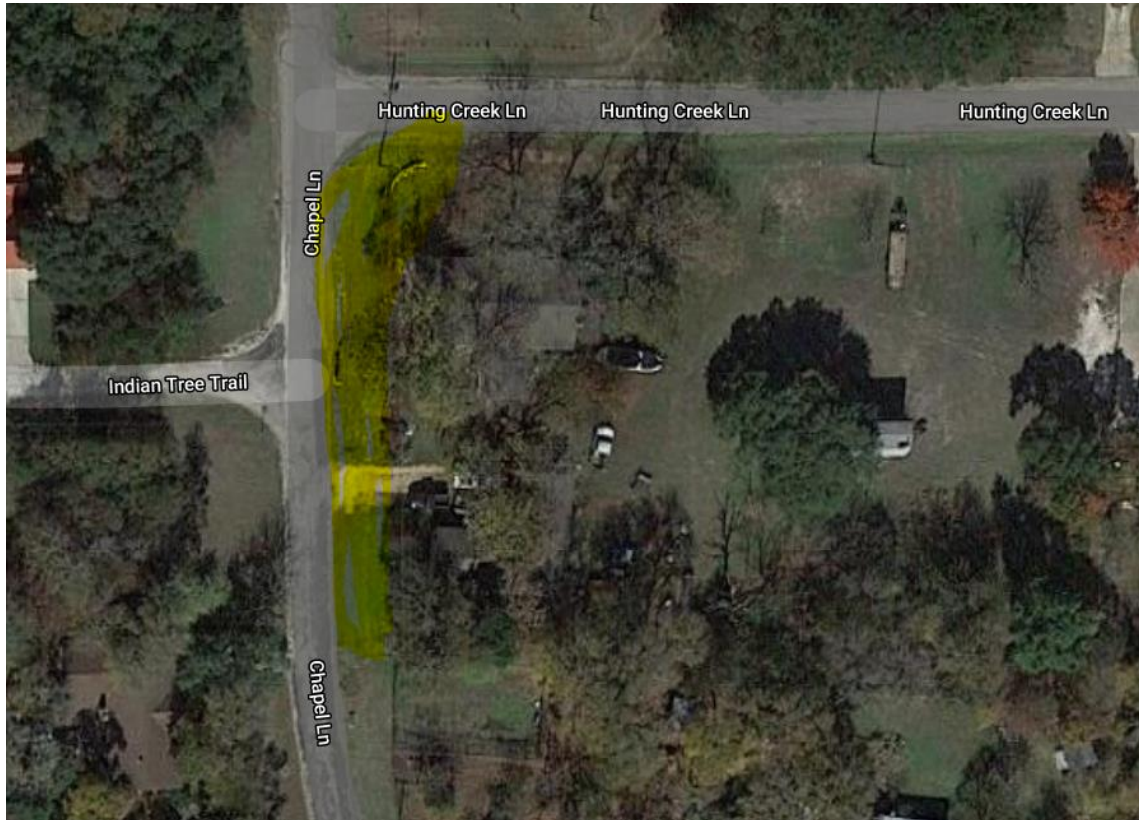
ARPEUTEURS
PROFESSIONAL SURVEYING
8906 WALL STREET, SUITE 302
AUSTIN, TEXAS 78754
(512) 832-1232

200100115
 199/4/6/1
 \$56.00
 PHOTOGRAPHIC MYLAR

Drainage Complaints to be considered for FY 20-21 (not all inclusive)

11517 Hunting Creek Ln

Resident reports long standing issue of water pooling and running across property from the west.



608 River Oaks

Resident reports water running through front yard from the south to the north – could be coming from the Big Ditch and could be remedied with the pending drainage project on River Oaks. VSL will follow up on the expected effects of the River Oaks/Big Ditch Project.

<https://drive.google.com/file/d/1dzhlnY1gkk9tla97694WhdLL4YMJGLmT/view>

https://drive.google.com/file/d/1t5qrXKe_nZKTUj1ud5wIYgKzdcGGh1rr/view

